

- NOTES:
- ALL DIMENSIONS MARKED ▼ MUST BE CONTROLLED BY QC
 - ALL DIMENSIONS MARKER (XX) MUST BE MEASURE BY FAI
 - RATED PARAMETERS OF CONNECTOR
 - Operating temperature: -55° C to 85° C
 - Rated Current: 1A/PIN(Signal contact)
2.5A/PIN(Power contact)
 - Rated Voltage: 30V AC/DC Per Contact
 - Contact Resistance: 50 mΩ Max
 - Switch PIN Resistance:150 mΩ Max
 - ELECTRICAL MECHANICAL ENVIRONMENT
 - Dielectric withstanding Voltage : 500V AC 1min.
 - Insulation Resistance: 1000 mΩ Min.
 - Normal Force : 30gf min
 - Switch PIN positive force : 20gf.Min
 - Insertion Force&Withdrawing force(For Tray type): 200~1000gf
 - Retention force(For Tray type):300~1000gf
 - Durability: SIM CARD 3000 cycles, m-SD 3000 cycles.
 - PART NO:

ITEM	PART NAME	MATERIAL	FINSH (TEST POINT SEE NOTE1)	QTY
5	Eject Bar	SUS304-3/4H T=0.40±0.01mm	polishing & cleanout	1
4	Eject Lever	SUS304-3/4H T=0.45±0.01mm	polishing & cleanout	1
3	Concact	C5240-SH T=0.10±0.01mm	1.25um NI MIN UNDER PLATED OVER ALL AU 0.25um ON CONTACT、 AU 0.025um SOLDER AREA	1
2	Shell	SUS304-H T=0.10±0.01mm	1.25um NI MIN UNDER PLATED OVER ALL (SWITCH) AU 0.125um ON CONTACT、 AU 0.025um SOLDER AREA	1
1	HOUSING	LCP-S475, UL94 V-0	NA	1

D/C PART NO. :

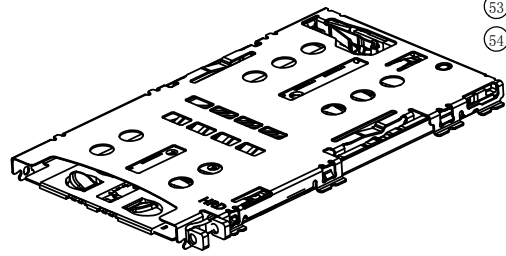
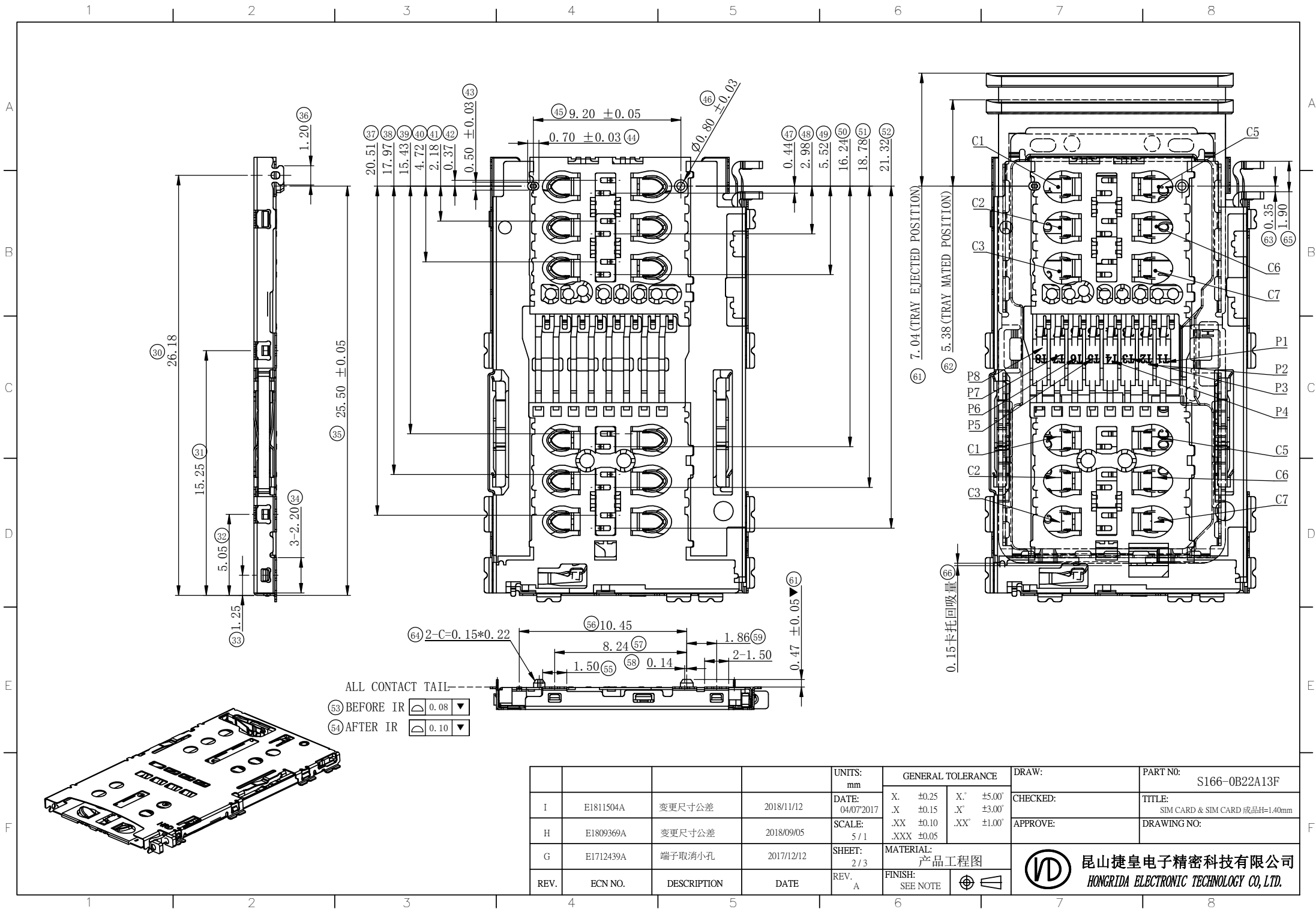
H=HRD
A
X
X
X
X
X
X

线别: A=A线、B=B线.....
班别: 1=白班
2=夜班
日: 1=1日, 2=2日.....
A=10日, B=11日.....
(WITH OUT I、O、Z)
月: 1=1月, 2=2月.....
A=10月, B=11月.....

电镀: A=Au 10U"
年: 7=2017年
8=2018年
9=2019年.....

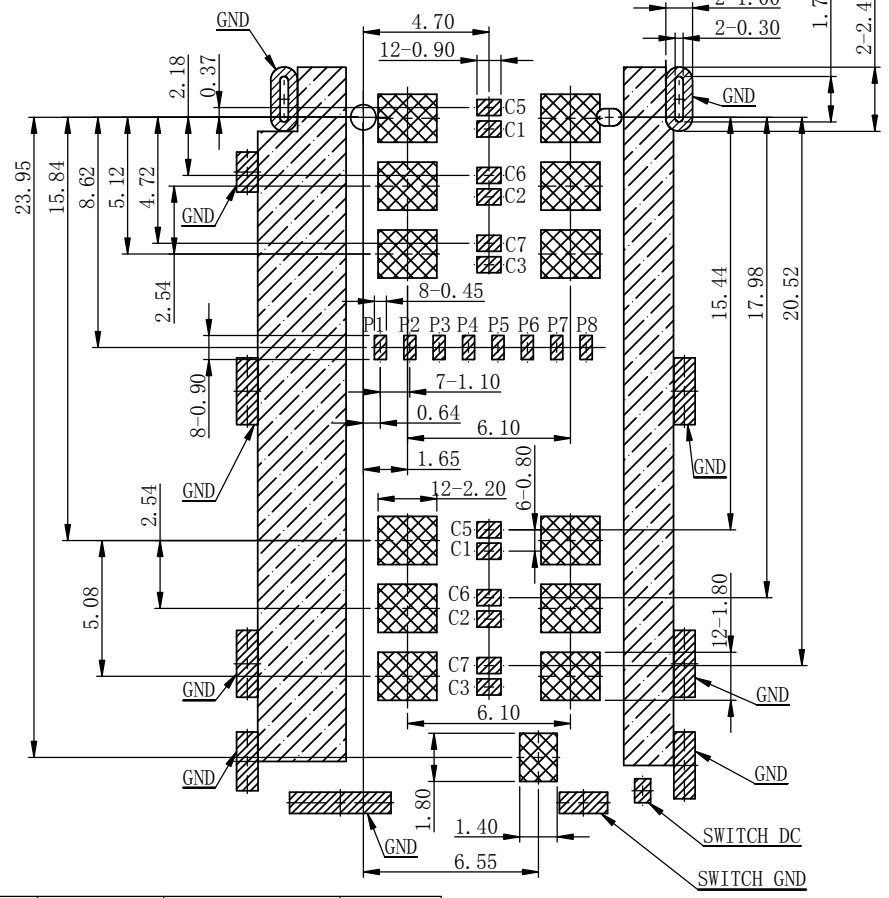
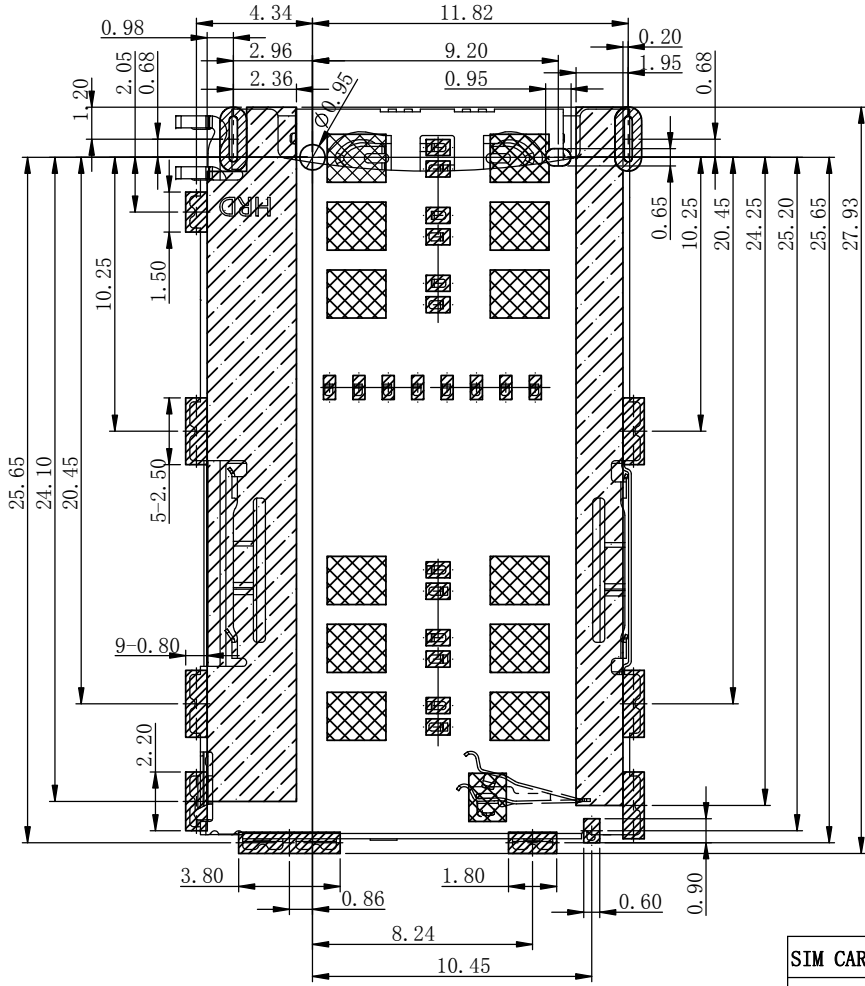
REV.	ECN NO.	DESCRIPTION	DATE	UNITS: mm	GENERAL TOLERANCE	DRAW:	PART NO:
I	E1811504A	变更尺寸公差	2018/11/12	DATE: 04/07/2017	X. ±0.25 .X ±0.15 .XX ±0.10 .XXX ±0.05	CHECKED:	S166-0B22A13F
H	E1809369A	变更尺寸公差	2018/09/05	SCALE: 5/1	.X' ±3.00' .XX' ±1.00'	APPROVE:	TITLE: SIM CARD & SIM CARD 成品H=1.40mm
G	E1712439A	端子取消小孔	2017/12/12	SHEET: 1/3	MATERIAL: 产品工程图		DRAWING NO:
				REV. A	FINISH: SEE NOTE		





				UNITS: mm	GENERAL TOLERANCE	DRAW:	PART NO: S166-0B22A13F
I	E1811504A	变更尺寸公差	2018/11/12	DATE: 04/07/2017	X. ±0.25 X' ±0.15 .XX ±0.10 .XXX ±0.05	X' ±5.00 X' ±3.00 .XX' ±1.00	TITLE: SIM CARD & SIM CARD 成品H=1.40mm
H	E1809369A	变更尺寸公差	2018/09/05	SCALE: 5/1			DRAWING NO:
G	E1712439A	端子取消小孔	2017/12/12	SHEET: 2/3	MATERIAL: 产品工程图		
REV.	ECN NO.	DESCRIPTION	DATE	REV. A	FINISH: SEE NOTE		


昆山捷皇电子精密科技有限公司
 HONGRIDA ELECTRONIC TECHNOLOGY CO., LTD.



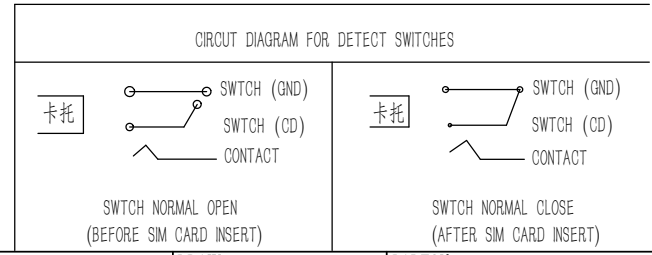
○ Through Hole

▨ Soldering Pad Area

▩ Open wire Restricted Area
(Possibility Touch Of Components On PCB)

▨ No Soldering Pad Area (Independent Pad area)
OR Open Wire & Copper Restricted Area
1: Touch area Of contact tips
NO electrical function and on only for mechanical function
2: NO first PCB-Layout circuits the area

SIM CARD PIN NO.	PIN NO.	T-CARD PIN NO.	PIN NO.
C1	VCC	P1	DAT2
C2	RST	P2	CD/DAT3
C3	CLK	P3	CMD
	RESERVED	P4	VDD
C5	GND	P5	CLK
C6	VPP	P6	VSS
C7	I/O	P7	DATO
	RESERVED	P8	DAT1
s/w	SWITCH PIN		



REV.	ECN NO.	DESCRIPTION	DATE	REV.	A	FINISH:	SEE NOTE	UNITS:	mm	GENERAL TOLERANCE	DRAW:	PART NO:	S166-0B22A13F
I	E1811504A	变更尺寸公差	2018/11/12	DATE:	04/07/2017	X. ±0.25	X' ±5.00'				CHECKED:	TITLE:	SIM CARD & SIM CARD 成品H=1.40mm
H	E1809369A	变更尺寸公差	2018/09/05	SCALE:	8/1	.XX ±0.10	.XX' ±1.00'				APPROVE:	DRAWING NO:	
G	E1712439A	端子取消小孔	2017/12/12	SHEET:	3/3	.XXX ±0.05				MATERIAL:			

VD 昆山捷皇电子精密科技有限公司
HONGRIDA ELECTRONIC TECHNOLOGY CO., LTD.