

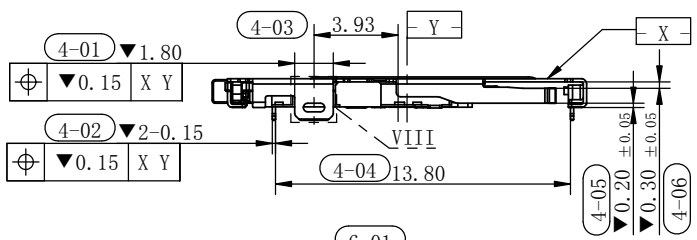
- NOTES:
- Finish
 - Contact:
 - Switch Area: 15u" Au Min;
 - Gold Flash on soldering area, 3~8u"Au Min.
 - Shell:
 - Soldering Area: 1u" Au Min.
 - Electical requirements:
 - Current rating: 0.3A per pin
 - Current voltage: 10V AC
 - Contact resistanc:
 - Switch contact initial 150mohm Max, After test: 175mohm Max.
 - Insulation resistance: 1 GOhm Min. 500VDC for 2 minutes.
 - Mechanical requirements:
 - Tray mating force: 12N Max. (with card);
Tray un-mating force: 4N Min (without card)
Tray ejection force: 15N Max. (with card)
 - Durability: 3000 cycles Min.
 - Environment requirements:
 - Operating temperature: -40° C to +85° C
 - Storage temperature: -40° C to +85° C
 - Burr: 0.02mm Max.
 - Dimensions with mark "▼" indicate the critical dimensions.
"▼" is CPK DIMENSIONS.

ITEM	NAME	Q' TY	MATERIAL	PLATING
4	Pusher	1	SUS304-3/4H T=0.50mm	N/A
3	Crank	1	SUS304-3/4H T=0.40mm	N/A
2	Switch-Housing	1	LCP, UL94V-0, Black	N/A
	Switch-Detect	1	C7025-TM03 T=0.12mm	15u"Au min plating on switch area 50~300u" Ni plating overall
1	Shell	1	SUS304-3/4H T=0.15mm	3u"Au min plating on switch area 50~300u" Ni plating overall

▽	0.08	Before IR
▽	0.10	After IR

				UNITS: mm	GENERAL TOLERANCE		DRAW:	PART NO:
				DATE: 10/16/2018	X. ±0.20	X' ±2.00	CHECKED:	S186-1B21F13B
				SCALE: 4/1	.X ±0.15	.X' ±1.00	APPROVE:	TITLE: 1.35H 3 IN 1 CARD CONNECTOR.
B	E1911648A	图面更新管控	11/04/2019	.XX ±0.10	.XX' ±0.5		DRAWING NO:	C-S186-001B
				SHEET: 1/4	.XXX ±0.05			
A		NEW	10/16/2018	MATERIAL: Customer drawing				
REV.	ECN NO.	DESCRIPTION	DATE	REV. A	FINISH: SEE NOTE			

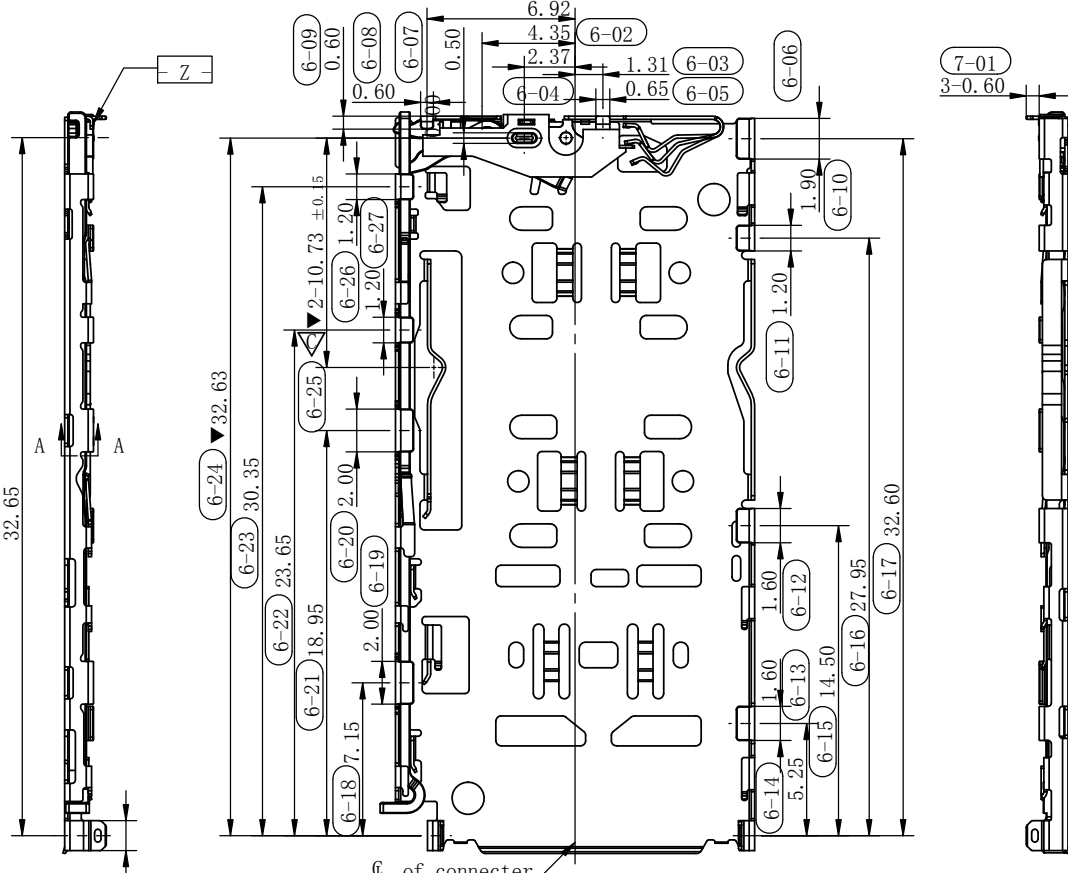
 昆山捷皇电子精密科技有限公司
HONGRIDA ELECTRONIC TECHNOLOGY CO., LTD.



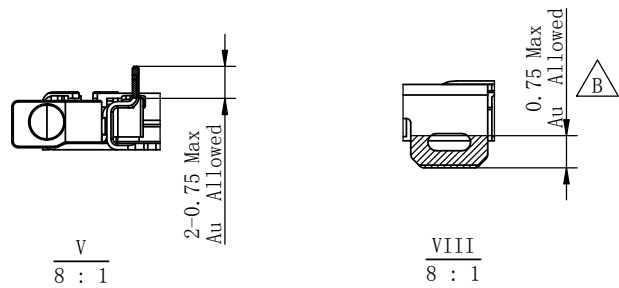
D/C PART NO

H X X X X X
 H=HRD
 电镀: A=Au XU"
 B=*****
 C=*****
 年: 7=2017年
 8=2018年
 9=2019年

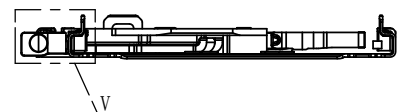
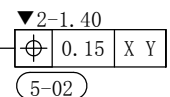
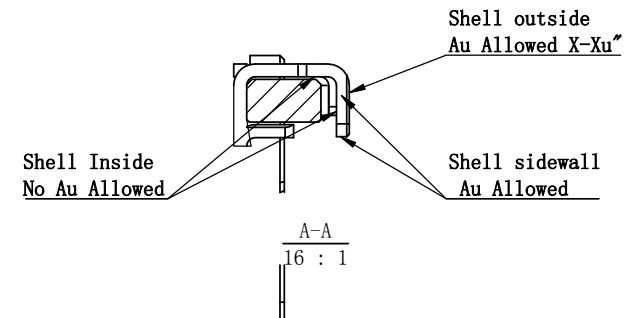
线别: A=A线、B=B线……
 班别: 1=白班
 2=夜班
 日: 1=1日, 2=2日……
 A=10日, B=11日……
 (WITH OUT I, O, Z)
 月: 1=1月, 2=2月……
 A=10月, B=11月……



Plating definition of shell T/F soldering trails

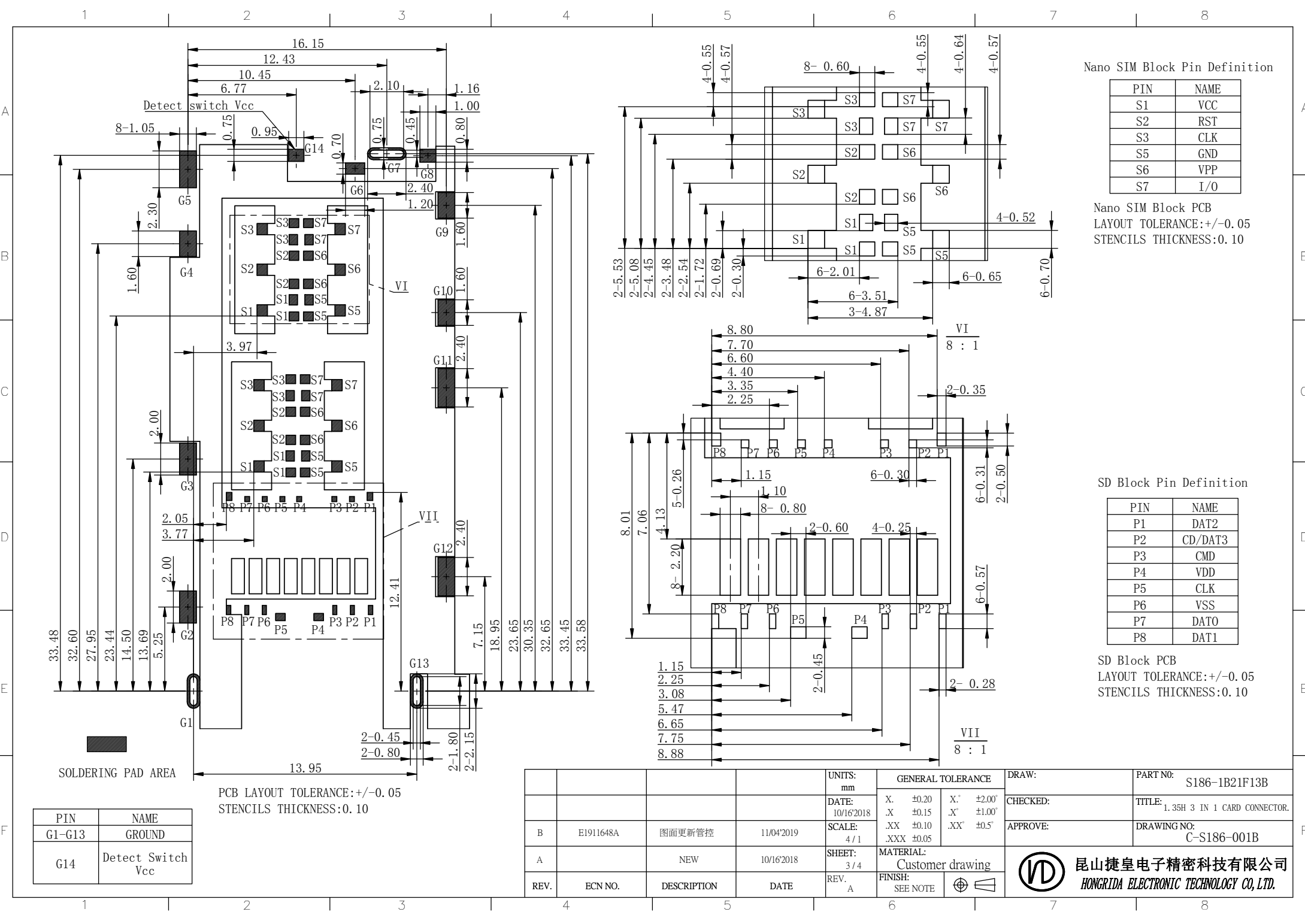


Plating definition of shell soldering trails at pin-push mechanism side



				UNITS: mm	GENERAL TOLERANCE		DRAW:	PART NO:
				DATE: 10/16/2018	X. ±0.20	X.' ±2.00	CHECKED:	S186-1B21F13B
				SCALE: 4/1	.X ±0.15	.X' ±1.00	APPROVE:	TITLE: 1.35H 3 IN 1 CARD CONNECTOR.
B	E1911648A	图面更新管控	11/04/2019	SHEET: 4/1	.XX ±0.10	.XX' ±0.5		DRAWING NO: C-S186-001B
A		NEW	10/16/2018	SHEET: 2/4	MATERIAL: Customer drawing			
REV.	ECN NO.	DESCRIPTION	DATE	REV.	FINISH: SEE NOTE			

 昆山捷皇电子精密科技有限公司
 HONGRIDA ELECTRONIC TECHNOLOGY CO., LTD.



Nano SIM Block Pin Definition

PIN	NAME
S1	VCC
S2	RST
S3	CLK
S5	GND
S6	VPP
S7	I/O

Nano SIM Block PCB
 LAYOUT TOLERANCE: +/-0.05
 STENCILS THICKNESS:0.10


SD Block Pin Definition

PIN	NAME
P1	DAT2
P2	CD/DAT3
P3	CMD
P4	VDD
P5	CLK
P6	VSS
P7	DAT0
P8	DAT1

SD Block PCB
 LAYOUT TOLERANCE: +/-0.05
 STENCILS THICKNESS:0.10

PIN	NAME
G1-G13	GROUND
G14	Detect Switch Vcc

PCB LAYOUT TOLERANCE: +/-0.05
 STENCILS THICKNESS:0.10

				UNITS: mm	GENERAL TOLERANCE		DRAW:	PART NO:
				DATE: 10/16/2018	X. ±0.20	X." ±2.00'	CHECKED:	S186-1B21F13B
B	E1911648A	图面更新管控	11/04/2019	SCALE: 4/1	.X ±0.15	.X' ±1.00'	APPROVE:	TITLE: 1.35H 3 IN 1 CARD CONNECTOR.
A		NEW	10/16/2018	SHEET: 3/4	.XX ±0.10	.XX" ±0.5'		DRAWING NO: C-S186-001B
REV.	ECN NO.	DESCRIPTION	DATE	REV.	MATERIAL: Customer drawing	FINISH: SEE NOTE	 昆山捷皇电子精密科技有限公司 HONGRIDA ELECTRONIC TECHNOLOGY CO., LTD.	

